



# Electrosurgical **PRODUCTS**



An ISO : 9001/13485 & 13485:2016 Certified Company

Українська т. 0677208303, 0506462127

# ELECTRO SURGICAL DEVICE Taurus M600 Plus

## Safety Features:

- Protection Class According to EN 60601-1
- Body Protected and cardiac protected design
- HF Leakage current < 150mA
- Patient Plate Monitoring System

## Salient Features:

- 99 User settable program mode
- Frequency: 480 kHz
- Display: 7 in LCD Touchscreen display
- Net Weight (Inc Accessories): 8.5 Kg
- Dimension: 410 mm (L) x 355 mm (W) x 155 mm (H)
- Input Supply Voltage 110V / 230 VAC (+/-15%) 50Hz
- Separates Monopolar & Bipolar foot switches.

PEARL ENDOSKOPE new Taurus M600 plus is the most versatile Electro Surgical Generator. Its office features and performance, never before available in a single generator.

The Taurus M600 plus has spray and coagulation which rivals the best spark gap generators and with minimum cutting effect. The blend gives a good Hemostasis effect than cutting and pure cut is exceptionally smooth and starts promptly even in irrigated procedures.

The isolated bipolar output, which has a non-sparking characteristic, is ideal for microsurgery, Neuro Surgery, Laparoscopy and other applications. Taurus M600 plus meets the surgeon's needs in the wide range of general procedures and in specialties including Gynecology, Urology, Neurology, Thoracic, Plastic and Reconstructive Surgery.



## STANDARD ACCESSORIES



Chuck Handle with  
Electrodes



Bipolar Forcep with  
Cable



Monopolar / Bipolar & Seal  
Double Pedal Foot switch



Disposable Hand  
Switch Pencil



Silicon Patient Plate  
with Cord

## Product Features

### CUT MODE

**PURE-** A high-frequency alternating current yields smooth, rapid cuts that evoke little to no hemostasis.

**BLEND 1-** Preset blended cut modes give the surgeon varying degrees of hemostasis in cut mode.

**BLEND 2-** The mode is used for the vaporization of prostatic tissue or any fat tissue. The higher output wattage gives fast cutting effect of the tissue.

**ENDOCUT-** The mode is used to automatically control cut system to reduce the complication rate of endoscopic sphincterotomy (EST) and serum hyperamylasemia after EST compared to the conventional blended cut mode.

### COAG MODE

**SPRAY-** Spray output is made for direct coagulation at the tissue with spark. This spark does not give any cutting effect as its crest factor is high.

**FORCE-** This mode is a greater degree of homeostasis and covers all demands of standard coagulation. This produce the fine tune waveform that creates superficial resistance in the tissue resulting in superior coagulation where the tissue destroyed by hyper evaporation.

**FULGURATE-** Sparking the tissue to lead to coagulation. There is no tissue-electrode contact; rather, voltage is raised in order to incite a spark between electrodes in order to coagulate the tissue in between.

**DESICCATE-** Coagulation in which the active electrode is in direct contact with the tissue is referred to as desiccation and is the type of coagulation used in most surgeries It ensures pinpoint desiccation with less destruction of peripheral tissue.

### BIPOLAR MODE

**MICRO-** High Voltage force coagulation for special purpose when speed is required.

**MACRO-** For highly precise control over coagulation process and privations of carbonization.

**CUT-** This Bipolar CUT technology nearly eliminate excessive current, even during precision cutting in minute tissue structure.

**AUTO-** Coagulation start by pressing the footswitch and stops output and audio signal automatically when the tissue is coagulated.

CUT			
MODE	MAX POWER	LOAD	CREAST FACTOR
PURE CUT	400 W	300Ω	1.5
BLEND 1	250 W	300Ω	1.5
BLEND 2	200 W	300Ω	1.5
ENDOCUT	99 %	300Ω	1.5
COAG			
MODE	MAX POWER	LOAD	CREAST FACTOR
SPRAY	120 W	300Ω	7
FORCE	120 W	300Ω	6.5
FULGURATE	150 W	300Ω	6
DESICCATE	150 W	300Ω	6

BIPOLAR			
MODE	MAX POWER	LOAD	CREAST FACTOR
MICRO	80 W	100Ω	1.5
MACRO	80 W	100Ω	1.5
CUT	100W	100Ω	1.5
AUTO	100W	100Ω	1.5

# ELECTRO SURGICAL DEVICE **Taurus Sur Seal Plus**

## Safety Features

- Protection Class According to EN 60601-1
- Body Protected and cardiac protected design
- HF Leakage current < 150mA
- Patient Plate Monitoring System

Electrosurgical vessel sealing is a specialized system developed by Pearl Endoskope for minimal access and open surgery. This technology can facilitate a range of minimal access surgical procedures, helping to meet government objectives of reduced length of stay for patients in hospital. Each of these devices comprises an electrosurgical unit (ESU) with a high power and low voltage bipolar mode and specialist instruments that combine tissue compression with tissue heating to produce haemostasis in arteries, veins or a bundle of tissue. This is a technology which is different from conventional diathermy and provides a unique

combination of pressure and energy to create vessel fusion and permanently fuses vessels up to and including 7 mm in diameter and tissue bundles, without dissection or isolation. An optimized combination of pressure and energy creates the seal by melting the collagen and elastin in the vessel walls and reforming it into a permanent, plastic-like seal and results in virtually no sticking or charring. It does not rely on a proximal thrombus. Feedback-controlled response system automatically discontinues energy delivery when the seal cycle is complete, eliminating the guesswork.



## Salient Features

- 99 program modes: User settable program mode
- Frequency - 480 kHz (Monopolar)
- Frequency - 1 MHz (Seal Mode)
- Display - 7 in LCD Touchscreen display
- Weight - 7.5 Kg. (Approx.)
- Dimension - L 440 (mm) x W 355 (mm) x H 155 (mm)
- Input Supply Voltage - 110V / 230 VAC (+/-15%) 50 KHz
- Separates Monopolar & Bipolar / Seal foot-switches

## Product Features

### CUT MODE

**PURE-** A high-frequency alternating current yields smooth, rapid cuts that evoke little to no hemostasis.

**BLEND 1-** Preset blended cut modes give the surgeon varying degrees of hemostasis in cut mode.

**BLEND 2-** The mode is used for the vaporization of prostatic tissue or any fat tissue. The higher output wattage gives fast cutting effect of the tissue.

**ENDOCUT-** The mode is used to automatically control cut system to reduce the complication rate of endoscopic sphincterotomy (EST) and serum hyperamylasemia after EST compared to the conventional blended cut mode.

### COAG MODE

**SPRAY-** Spray output is made for direct coagulation at the tissue with spark. This spark does not give any cutting effect as its crest factor is high.

**FORCE-** This mode is a greater degree of homeostasis and covers all demands of standard coagulation. This produce the fine tune waveform that creates superficial resistance in the tissue resulting in superior coagulation where the tissue destroyed by hyper evaporation.

**FULGURATE-** Sparking the tissue to lead to coagulation. There is no tissue-electrode contact; rather, voltage is raised in order to incite a spark between electrodes in order to coagulate the tissue in between.

**DESICCATE-** Coagulation in which the active electrode is in direct contact with the tissue is referred to as desiccation and is the type of coagulation used in most surgeries. It ensures pinpoint desiccation with less destruction of peripheral tissue.

### BIPOLAR MODE

**BI-COAG-** for highly precise control over coagulation process and privations of carbonization.

**BI-CUT-** Bipolar CUT technology lets you nearly eliminate excessive current, even during precision cutting in minute tissue structure.

**AUTO-** coagulation start by pressing the footswitch and stops output and audio signal automatically when the tissue is coagulated.

**SEAL-** This mode provides unique combination of pressure & energy to create vessel fussion, leaving no foreign material behind. PEARL ENDOSKOPE designed special feature that seal as well as cut simultaneously used with help of sealer instrument using programme 5 & 6 for surgery.

### Technical Specification:

CUT			
MODE	MAX POWER	LOAD	CREAST FACTOR
PURE CUT	400 W	300Ω	1.5
BLEND 1	250 W	300Ω	1.5
BLEND 2	200 W	300Ω	1.5
ENDOCUT	99 %	300Ω	1.5
COAG			
MODE	MAX POWER	LOAD	CREAST FACTOR
SPRAY	120 W	300Ω	7
FORCE	120 W	300Ω	6.5
FULGURATE	150 W	300Ω	6
DESICCATE	150 W	300Ω	6
BIPOLAR			
MODE	MAX POWER	LOAD	CREAST FACTOR
BI-COAG	80 W	100Ω	1.5
BI-CUT	80 W	100Ω	1.5
AUTO	100 W	100Ω	1.5
SEAL	150 W	100Ω	1.5

## STANDARD **ACCESSORIES**



Chuck Handle with  
Electrodes



Bipolar Forcep with  
Cable



Monopolar / Bipolar & Seal  
Double Pedal Foot switch

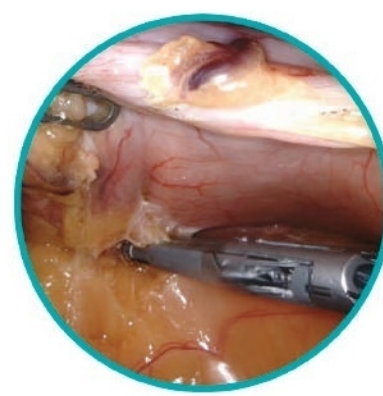
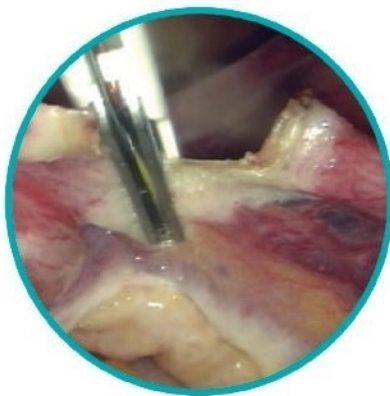


Disposable Hand Switch  
Pencil



Silicon Patient Plate  
with Cord

## SEALING STEP OF **LAP INSTUMENT**





## TAURUS Tur Seal PLUS

### Safety Features

- Protection Class According to EN 60601-1
- Body Protected and cardiac protected design
- HF Leakage current < 150mA
- Patient Plate Monitoring System

### Salient Features

- 99 User settable program mode
- Frequency: 480 kHz (Monopolar/TURP)
- Frequency: 1 MHz (Seal Mode)
- Display: 7 in LCD touchscreen display
- Input Supply Voltage - 100 V / 230 VAC (+/-15%) 50 KHz

The PEARL ENDOSKOPE innovative model of ESU Crown is design to provide a safe, user friendly generator to meet all types of surgery procedure performance demands. PEARL ENDOSKOPE incorporates automatic safety features into the CROWN like self-test circuits, audible tones, discreet outputs, isolated circuitry, and patient plate monitoring. It has multiple output of monopolar, bipolar, vessel sealing and saline TURP functions and will satisfy a multitude of surgical requirements while staying safe, flexible, convenient, and affordable.

## Product Features

### CUT MODE

**PURE CUT-** A high-frequency alternating current yields smooth, rapid cuts that evoke little to no hemostasis.

**BLEND 1-** Preset blended cut modes give the surgeon varying degrees of hemostasis in cut mode.

**BLEND 2-** The mode is used for the vaporization of prostatic tissue or any fat tissue. The higher output wattage gives fast cutting effect of the tissue.

**ENDOCUT-** The mode is used to automatically control cut system to reduce the complication rate of endoscopic sphincterotomy (EST) and serum hyperamylasemia after EST compared to the conventional blended cut mode.

### COAG MODE

**SPRAY-** Spray output is made for direct coagulation at the tissue with spark. Above spark does not give any cutting effect as its crest factor is high.

**FORCE-** This mode is a greater degree of homeostasis and covers all demands of standard coagulation. This produce the fine tune waveform that creates superficial resistance in the tissue resulting in superior coagulation where the tissue destroyed by hyper evaporation.

**FULGURATE-** Sparking the tissue to lead to coagulation. There is no tissue-electrode contact; rather, voltage is raised in order to incite a spark between electrodes in order to coagulate the tissue in between

**DESICCATE-** Coagulation in which the active electrode is in direct contact with the tissue is referred to as desiccation and is the type of coagulation used in most surgeries It ensures pinpoint desiccation with less destruction of peripheral tissue.

### BIPOLAR & SEAL

**BI-COAG-** For highly precise control over coagulation process and privations of carbonization.

**BI-CUT-** Bipolar CUT technology lets you nearly eliminate excessive current, even during precision cutting in minute tissue structure.

**SEAL-** Mode provides unique combination of pressure & energy to create vessel fussion, leaving no foreign material behind. PEARL ENDOSKOPE designed special feature that seal as well as cut simultaneously used with help of sealer instrument using programme 5 & 6 for surgery.

**BITUR-** The advantage of bipolar TURP is that saline can be used during the procedure which is much safe option, virtually eliminating the risk of TURP syndrome as a result, larger and more complicated prostate gland can be treated with Bipolar TURP mode.

### BITUR / URO BITUR:

PEARL ENDOSKOPE is leading manufacturer of electrosurgical cautery machine has design an advance technology electrosurgical machine for under water TURP. A transurethral resection of the prostate (TURP) is a surgical procedure that removes portions of the prostate gland through the penis. A TURP requires no external incision Bipolar TURP allows saline irrigation and eliminates the need for an ESU grounding pad thus preventing post-TURP hyponatremia (TUR syndrome) and reducing other complications.

CUT						
MODE	MAX POWER	LOAD	CREAST FACTOR	CROWN	BITUR	URO BITUR
PURE CUT	400W	500Ω	1.5	✓	✓	×
BLEND 1	250W	500Ω	1.5	✓	✓	×
BLEND 2	200W	500Ω	1.5	✓	✓	×
ENDOCUT	99%	500Ω	1.5	✓	✓	×
COAG						
SPRAY	120W	500Ω	7	✓	✓	×
FORCE	120W	500Ω	6.5	✓	✓	×
FULGRATE	150W	500Ω	6	✓	✓	×
DESICCATE	150W	500Ω	6	✓	✓	×
BIPOLAR / SEAL / SALINE TURPBIPOLAR/						
BI-COAG/ MICRO	80W	100Ω	1.5	✓	✓	×
BI-CUT / MACRO	80W	100Ω	1.5	✓	✓	×
AUTO	100W	100Ω	1.5	×	✓	×
SEAL	150W	100Ω	1.5	✓	×	×
SALINE CUT	300W	100Ω	1.5	✓	✓	✓
SALINE COAG	150W	100Ω	1.5	✓	✓	✓

### STANDARD ACCESSORIES



Chuck Handle with Electrodes



Bipolar Forcep with Cable



Monopolar / Bipolar & Seal Double Pedal Foot switch



Disposable Hand Switch Pencil



Silicon Patient Plate with Cord



## SSE 400Plus

### Features:

- Microprocessor based
- Smooth and pure cut
- Good hemostasis effect
- Minimum cutting effect
- Isolated bipolar output with non sparking characteristic
- Ensure high precision and reliability in surgical procedures

**Dimension (WXHxD):** 290MM x 105MM x 260MM

**Weight:** 4kg

**Power Setting:** Dial 0 To 10

**Input supply voltage:** 230VAC + 15% @ 50/60HZ



## ELECTRO SURGICAL DEVICE

# Smart 400+

is a micro controller based model with all the required features. Full power output at low cost. This is the right model for the customers who required basic 400W micro controller based model with 20 programs.

### Specification:

99 user settable program mode.

**Frequency:** 480 khz

**Display:** 7 segment led

**Weight:** 7.5 kg(approx)

**Dimension:** 410mm(L)x355mm(W)x  
155mm(H)  
Input supply voltage 230v(+/-15%)50hz

## ELECTRO SURGICAL DEVICE

# Smart 400+

### PERFORMANCE FEATURES:

#### Real Time Tissue Response Technology:

Real Time Tissue Response Technology provides surgeons with superior performance at lower power settings, minimizing the risk of tissue damage and neuromuscular stimulation.

#### High Power Efficiency of 97%:

The power efficiency of Enertech generators are the highest in it's class 97%. This leads to multiple benefits like increased reliability, most compact size, high portability, economy and reduced power consumption.

### Patient Plate Return Electrode Monitoring System:

Patient Plate Return Electrode Monitoring System provides instant indication of the quality of contact of the patient plate return electrode. Failure or poor contact results in fault indication with sound alarm which substantially reduces the risk of burn under the patient return electrode.

<b>Dimension ( W x H x D )</b>	<b>Weight</b>	<b>Input Voltage</b>
300 mm x 150 mm x 340 mm	5.5 Kg.	170 to 260 VAC 50 Hz

	<b>Max. Power (Watts)</b>	<b>Reted Load (Ohms)</b>
Operating Frequency	480 Khz	-
No. of Program	20	-
Display	7 Segment LED Digital	-
Pure Cut	400 W	500
Blend 1	250 W	500
Blend 2	200 W	500
Endocut	99 W	500
Spray	120 W	500
Fulguration	150 W	500
Desiccation / Soft	150 W	500
Bipolar Coagulation Micro	80 W	100
Bipolar Coagulation Macro	80 W	100
Bipolar Cut	99 W	100

## Smart 400+ & SSE 400Plus STANDARD ACCESSORIES



Chuck Handle with  
Electrodes Autoclavable



Bipolar Forcep with  
Cable Autoclavable



Monopolar Double Pedal  
Foot switch / Bipolar & seal  
Double Pedal Foot switch



Disposable Hand Switch  
Pencil - Imported



Patient Plate with  
Cord Autoclavable

## CUT MODE

**PURE CUT-A HIGH:** Frequency alternating current yields smooth, rapid cuts that evoke little to know.

**Blend 1:** Preset blended cut modes give the surgeon varying degrees of hemostasis in cut mode.

**Blend 2:** The mode is used for vaporization of prostatic tissue or any fat tissue. the higher output wattage gives fast cutting effect of the tissue.

**Endo cut:** The mode is used to automatically controlled cut system to reduce the complication rate of endoscopic sphincterotomy (est) and serum hyperamylasemia after est compared to the conventional blended cut mode.

## CUTTING SEALING INSTRUMENT

### Bipolar & Seal

**Bi-Coag:** For highly precise control over coagulation process and privations of carbonization.

**Bi-cut:** This bipolar cut technology nearly eliminate excessive current even during precision cutting in minute tissue structure.

**Auto:** Coagulation start by pressing the footswitch and stops output and audio signal automatically when the tissue is coagulated.

**Seal:** Mode provides unique combination of pressure & energy to create vessel fussion, leaving no foreign material behind.

## COAG MODE

**Spray:** Spray output is made for direct coagulation at the tissue with spark. above spark does not give any cutting effect as its crest factor is high.

**Forcce:** This mode is greater degree of homeostasis and cover all demands of standards coagulation. to cauterize large surface areas quickly when required.

**Fulgarate:** Sparking the tissue to lead to coagulation. to the tissue in between.

**Desiccate:** Coagulation in which the active electrode is in direct contact with the tissue is referred to as desiccation and is the type, destruction of peripheral tissue.

## PERFORMANCE FEATURES

99 user settable program mode.

**Frequency:** 480 khz

**Display:** 7 segment LED

**Weight:** 7.5 kg (approx)

**Dimenssion:** 410mm (L) x 355mm (W) x 155mm (H)

Input Supply Voltage 230V (+/- 15%) 50Hz

## STANDARD ACCESSORIES



Chuck Handle with  
Electrodes Autoclavable



Bipolar Forcep with  
Cable Autoclavable



Monopolar Double Pedal  
Foot switch / Bipolar & seal  
Double Pedal Foot switch



Disposable Hand Switch  
Pencil - Imported



Patient Plate with  
Cord Autoclavable



## ELECTRO SURGICAL DEVICE **Smart 400+** **ADVANCE**

is a micro controller based model with all the required features. Full power output at low cost. This is the right model for the customers who required basic 400W micro controller based model with 20 programs.

### PERFORMANCE FEATURES:

#### Real Time Tissue Response Technology:

Real Time Tissue Response Technology provides surgeons with superior performance at lower power settings, minimizing the risk of tissue damage and neuromuscular stimulation.

#### High Power Efficiency of 97%:

The power efficiency of Enertech generators are the highest in it's class 97%. This leads to multiple benefits like increased reliability, most compact size, high portability, economy and reduced power consumption.



### Specification:

99 user settable program mode.

**Frequency:** 480 khz

**Display:** 7 segment led

**Weight:** 7.5 kg(approx)

### Dimension:

410mm(L)x355mm(W)x

155mm(H)

Input supply voltage

230v(+/-15%)50hz

### Patient Plate Return Electrode Monitoring System:

Patient Plate Return Electrode Monitoring System provides instant indication of the quality of contact of the patient plate return electrode. Failure or poor contact results in fault indication with sound alarm which substantially reduces the risk of burn under the patient return electrode.

	Max. Power (Watts)	Rated Load (Ohms)
Operating Frequency	480 KHz	-
No. of Program	20	-
Display	7 Segment LED Digital	-
Pure Cut	400 W	500
Blend 1	250 W	500
Blend 2	200 W	500
Endocut	99 W	500
Spray	120 W	500
Fulguration	150 W	500
Desiccation / Soft	150 W	500
Bipolar Coagulation Micro	80 W	100
Bipolar Coagulation Macro	80 W	100
Bipolar Cut	99 W	100

Dimension ( W x H x D )	Weight	Input Voltage
300 mm x 150 mm x 340 mm	5.5 Kg.	170 to 260 VAC 50 Hz

### Smart 400+ Advance

#### STANDARD ACCESSORIES



Chuck Handle with Electrodes Autoclavable



Bipolar Forcep with Cable Autoclavable



Monopolar Double Pedal Foot switch / Bipolar & seal Double Pedal Foot switch



Disposal Hand Switch Pencil - Imported



Patient Plate with Cord Autoclavable

# Ultrasonic SCALPEL SYSTEM

## AREAS OF APPLICATION

-  General Surgery
-  Thoracic Surgery
-  Plastic Surgery
-  ENT
-  Gynaecology
-  Pediatrics
-  Urology



Contributing to deliver improved efficiency, better outcomes and cost-saving in the operating room while reducing environmental pollution. Making medical care more affordable, affable and eco-friendly.

# ULTRASONIC SCALPEL SYSTEM

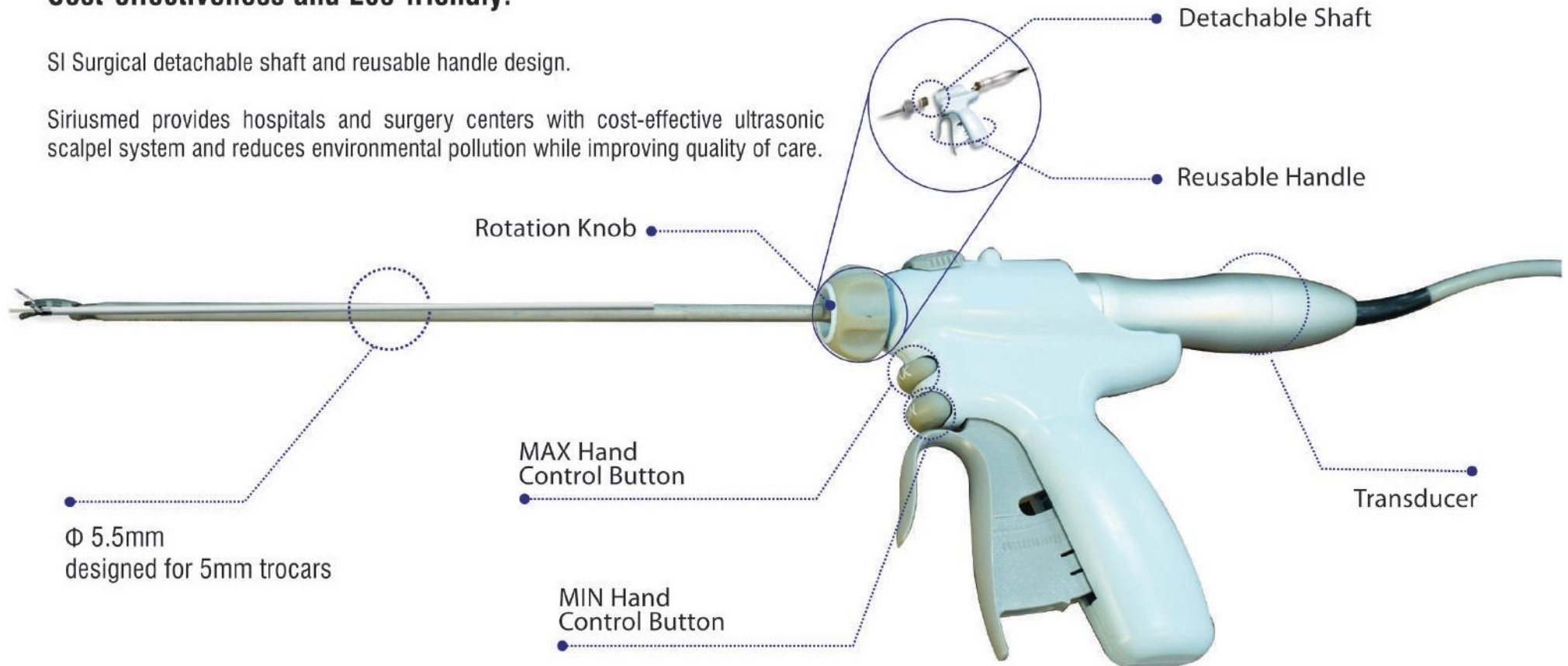
SI Surgical provides you with high performance ultrasonic scalpel system for use on laparoscopic and open procedures for dissection, cutting and coagulation.

## FEATURES AND BENEFITS

### Cost-effectiveness and Eco-friendly:

SI Surgical detachable shaft and reusable handle design.

Siriusmed provides hospitals and surgery centers with cost-effective ultrasonic scalpel system and reduces environmental pollution while improving quality of care.



## High Efficiency

Fastest-in-class tissue cuffing.  
Precise dissection, cutting and coagulation with a single device.

## High Performance

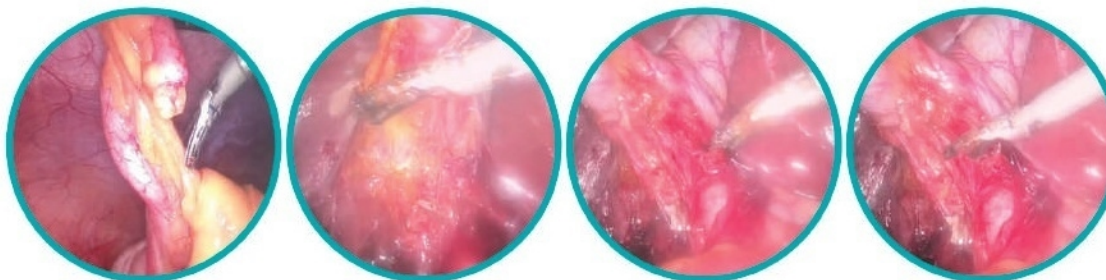
Reliable hemostasis with minimal thermal spread.  
Reduced mists generation to help maintain optimal visualization.

## Ready to Use

Quick automatic self-test system.

## User-friendly

Intuitive interface with 5 adjustable power levels to help ensure surgeons have more choices for different procedures.  
Compact design, light weight and convenient to carry in the OR.

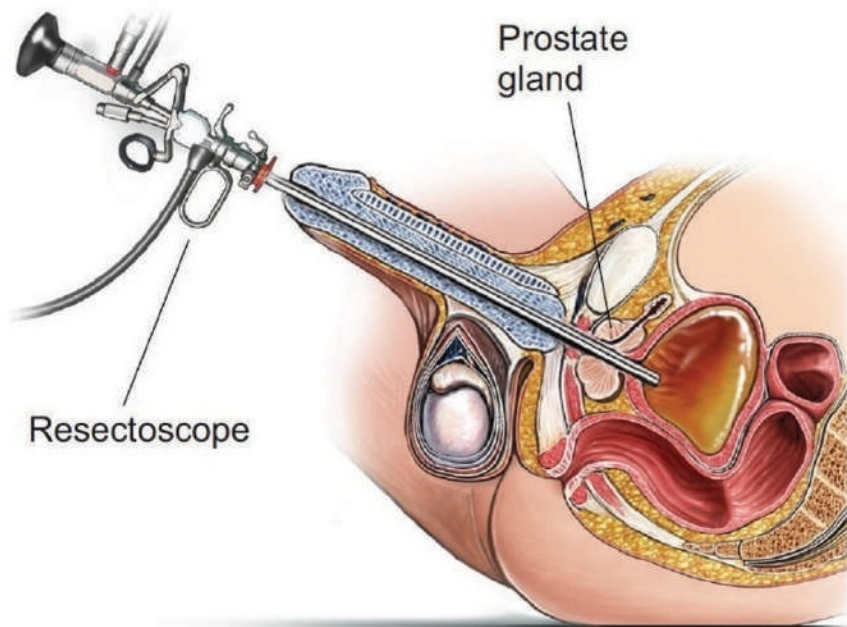


# BIPOLAR Resectoscope



## Resectoscope Working Element:

- Fast and control cutting
- 2 stopcocks 26/24 ch. small hole perforation consisting of outer sheath 26 channel, 2 stopcock, B Hole perforation
- Inner sheath 24 channel CH Rotatable with german ceramic teeth 30°
- For 4 mm, 2.9mm/30° telescope



## Spceial Features:

- Active/Passive cutting by spring action
- Bipolar and monopolar both are available
- Electrodes in normal position out side the sheath



# MONOPOLAR/BIPOLAR Resectoscope

## Resectoscope Working Element:

- Fast and control cutting
- 2 stopcocks 26/24 ch. small hole perforation consisting of outer sheath 26 channel, 2 stopcock, B Hole perforation
- Inner sheath 24 channel CH Rotatable with german ceramic teeth 30°
- For 4 mm, 2.9mm/30° telescope

## Special Features:

- Active/Passive cutting by spring action
- Bipolar and monopolar both are available
- Electrodes in normal position outside the sheath

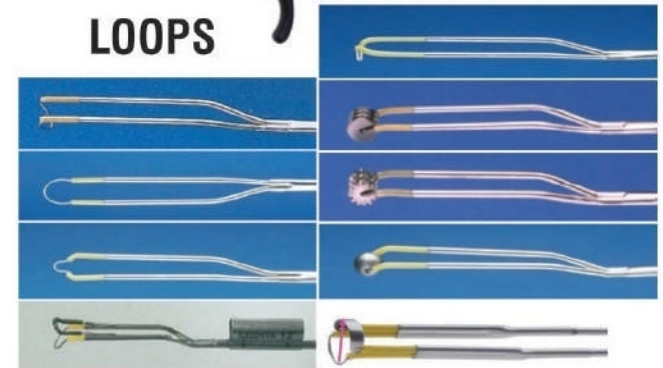
## HYSTEROSCOPE SET (4mm/2.9mm)

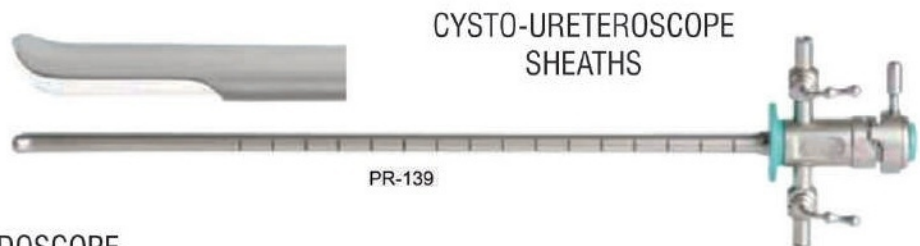
### Specification:

- HD Vision
- Sapphire Tip
- Separate Operative Channel of 5Fr.
- Inflow outflow channel for clear
- Visualisation

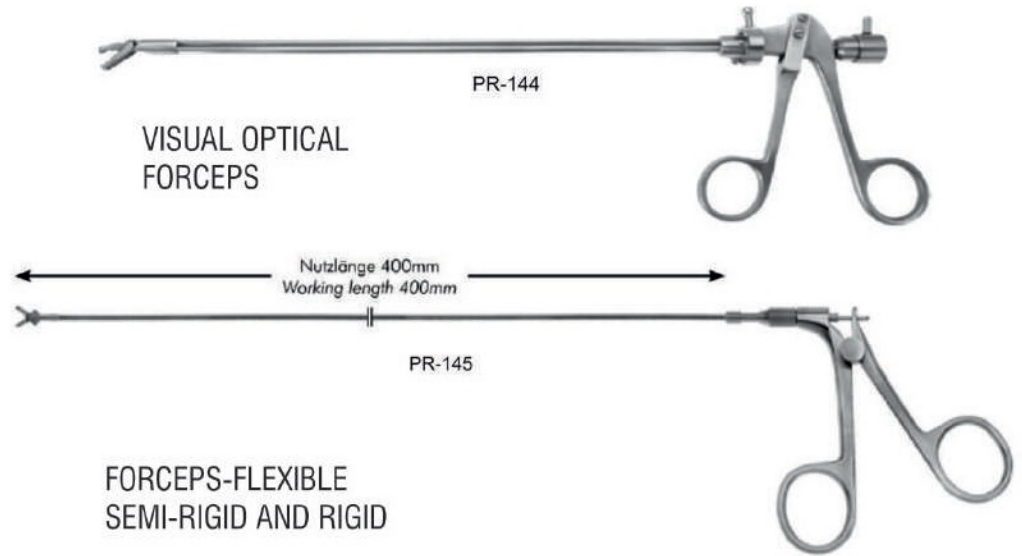


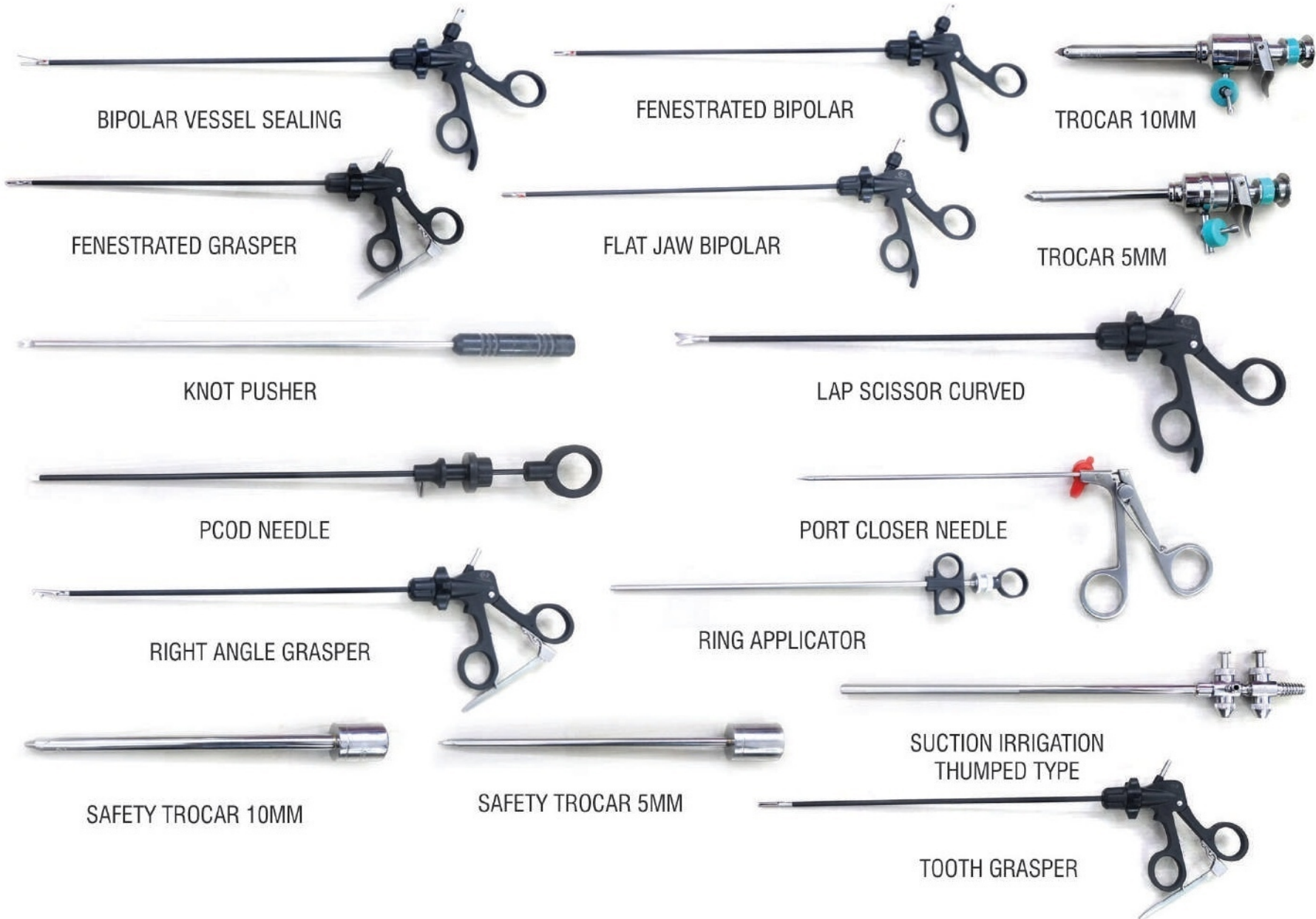
## LOOPS





# Urology





BIPOLAR VESSEL SEALING

FENESTRATED BIPOLAR

TROCAR 10MM

FENESTRATED GRASPER

FLAT JAW BIPOLAR

TROCAR 5MM

KNOT PUSHER

LAP SCISSOR CURVED

PCOD NEEDLE

PORT CLOSER NEEDLE

RIGHT ANGLE GRASPER

RING APPLICATOR

SAFETY TROCAR 10MM

SAFETY TROCAR 5MM

SUCTION IRRIGATION  
THUMPED TYPE

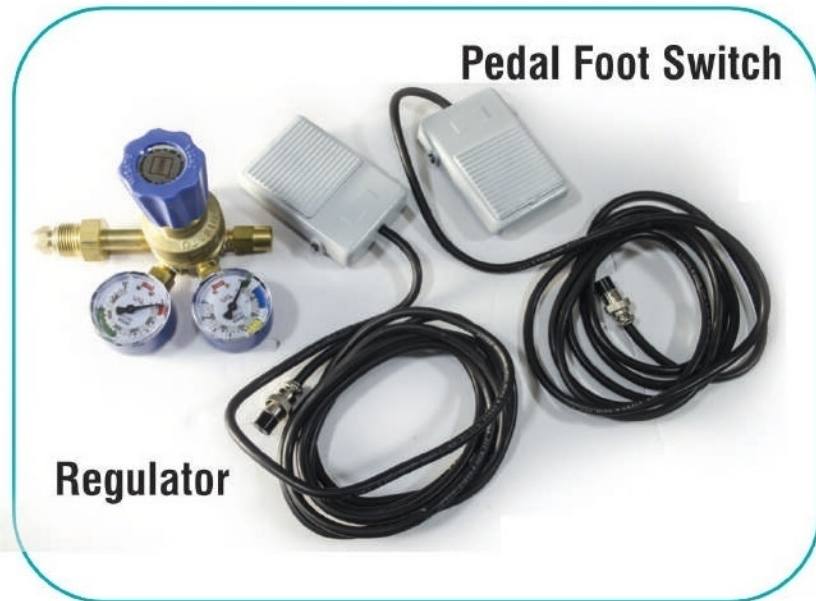
TOOTH GRASPER



## PNEUMATIC LITHO TRIPSY **SI Litho Digital**

SI-LITHO IS AN INTRA corporeal electro –pneumatic lithotripsy , this device requires the supply of continuous ,air compressed, central oxygen, oxygen cylinder, since only compressed air or oxygen gas therefore, no possibility of heat generation inside, hence no chance of injury of tissue nor destruction on Optics endoscopy.

## STANDARD ACCESSORIES



## Features:

Light weight ,compact with abs and metal body,

Digitally controlled flow and pressure devices generates highly accurate pulses in the form of single pulse operating mode and continuous pulse operating mode. it is use to control to the hand piece for better stone fragmentation.

Pressure setting knob to set the desired pressure, which also facilities constant monitoring of pressure by display,

## Technical specification:

### Control unit:

**Supply voltage:** 110/210-240v a.c, 60/50 hz

**Power consumption:** 30 watts

**Supply pressure:** 0-5 kg/cms 2 by digital display,

**Input gas:** Medica lair compressed /oxygen

**Pulse mode:** Single or multiple pulses digitally, selected pulse rate (1pulse/second to 12 pulses)

### Sterilization:

**Hand piece:** ETO Sterilizer

**Probe:** Autoclave, eto sterilizer

**Electrical safety:** According to IEC- 60601/ IEC-60601-2

**Manufacturing Standards:** ISO /13485/CE

### Main unit:

**Size:** L 210mm xw 250mm x150mm

**Weight:** 3.5 k.g

**Hand piece:** 195 x22 mm (made of aluminum alloy)

**Probes:** 0.8 mm,1 mm,1.1mm , 1.2mm, 1.4mm, 1.5mm,

**Length:** 610mm

**Pcni probe:** 2.5mm, 3.0mm length:450mm

**litho bridge probe:** Size 1.5mm, length-460mm

## Speciality for (PNL) stone and renal pelvic or calix stones



Urs treatment for ureteral stones



Endoscopic treatment for bladder stones.

**CONTROL UNIT**  
**HAND PIECE-02NOS**  
**FOOT SWITCH- 02NOS**  
**PROBES-06NOS**  
**OXIZEN REGULATOR -01NOS**

SOFT PU AIR TUBING TO CONNECT WITH HAND PIECE -01NOS  
AIR TUBING TO CONNECT WITH CONTROL UNIT-01NOS)  
PROTECTION CAP HAND PIECE -01 NOS  
MAIN CABLE-1 NOS

## HI-SPEED Morcellator

Laparoscopic Morcellator is a small handy device, integrated with rotating blades that break large tissues into small fragments during laparoscopic surgery. The small fragments of tissues are then vacuumed out of the body.

With this device, the surgeon makes a small incision of fewer than 2 centimeters to remove fibroids and other tissues. These small incisions ensure less post-operative pain, quick patient recovery, and few wound complications.

### Features

- Small and handy devices
- Can break large tissues
- Rotating blades
- Ensure quick patient recovery

### Applications:

- Hysterectomy
- Laparoscopic surgery
- Myomectomy

### Technical Specifications:

**Diameters:** 12mm, 15mm, and 20mm

**Material:** Stainless steel





## CO2 INSUFFLATOR **HI Flow 30L**

The CO<sup>2</sup> Insufflators are next generation newly designed line CO<sup>2</sup> Insufflators with outstanding technical features. These units are controlled by microprocessor of the latest generation. Stable pressure balance in the abdomen is guaranteed by high flow performance with progressive and low insufflation pressure.

### STANDARD ACCESSORIES



Co2 yolk



Insufflator Metal Tube



Insufflator White Tube

## Performance Features:

### Advance Flow Control:

The CO<sup>2</sup> Insufflators stands for AFC (Advance Flow Control Insufflations) for precise and safe gas flow control.

### Software:

It's "intelligent" software controlled pressure release mechanism prevents dangerous pressure build up in the abdomen when using such apparatus as laser or argon beamers.

### Safety:

Automatic self check, activated each time unit is switched on, make sure all electronic and pneumatic components are in good running order.

### Inbuilt System Gas Heater:

The unit comes with built in high efficiency gas heater. The gas heater is pre adjusted and works on plug and play basis fully automatically.

### Real Time Data Display:

LED 7 segment display for set pressure, actual pressure set volume, Gas Consumption volume, start stop LED and fault.

## Specification:

- Front panel displays and controls
- Verss/trocar mode.
- Separate digital display for actual value and set value of pressure and flow rate.
- Pumped gas volume counter with reset button.
- Display for actual gas consumption & temperature.
- Outlet gas temp with heater on indicator.
- Co2/air mode button for emergency.
- Co2 gas status indicator.

Model	ENCO <sup>2</sup> 30L With Air
Insufflation Pressure	0 - 30 mm Hg.
Dimension ( W x H x D )	290 mm x 110 mm x 300 mm.
Weight	4 Kg.
Gas	CO <sub>2</sub> ( Medical ) + Air
Gas Connection	UNF 7/16"
Power Consumption	15 Watts Maximum
Input Pressure Minimum	1 bar
Input Pressure Maximum	10 Bar
Output Connection	4 to 5 mm ID Tube
Flow Rate Setting	1 to 30 ltr/min
Keyboard	Feather Touch
Gas Warmer	Builtin
Manufactured and tested	IEC 601-1 / EN 60601-1
Input Supply Voltage	230 VAC + 15 % @ 50/60 Hz (110 V Optional)



## LED LIGHT SOURCE **L300**

### Specification:

**Display:** 3.2" LCD Touch Screen - HD

**Life Span of LED:** @50000 Hours

**Light Guide Connection:** Storz Type

**Intensity Control:** 10 to 100%

**Colour Temperature:** 6000°K

**Operation Temperature:** 10°C to 40°C

**Power:** 140 watts

**Operation Humidity:** 10% to 90%

**Voltage:** 170V - 270V AC

**Frequency:** 50HZ

**Dimension (W x H x D):** 290mm x 140mm x 335mm

**Weight:** 4.00 kg Approx



### STANDARD ACCESSORIES





**Technical Parameters**  
 Supply voltage: ~220V 50HZ  
 Power: 150 VA  
 Range of press: 15~400mmHg(2~53.3kPa)  
 Range of flw: 0.1~1.0L/min  
 Noise: <70dB






# Irrigation Pump 9000IP

**Function Characteristic:**

- Use roller pump to get large flow , irrigation tube can be autoclavable sterilization to avoid secondary pollution.
- Pressure is adjustable on request and real time monitored.

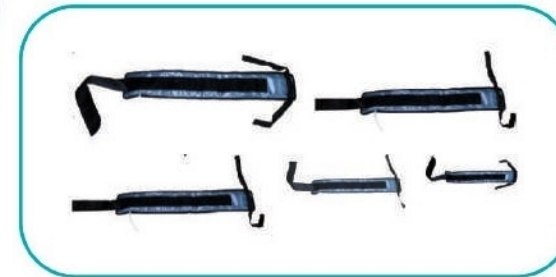
\* Uses: Hystrocopy, Arthoscopy, Cystoscopy

## Accessories

	Irrigation tube		Thrusting needle
	Silastic		Connector
	Tee joint & tube		



## STANDARD ACCESSORIES



**Cuff Sets**



**Tubing**

## SINGLE CUFF DIGITAL Tourniquet 9000SCT



### Specification:

- Enclosure: ABS Plastic, with special Handle
- Dimensions: 215mm (W) x 140mm (H) x 230mm (L)
- Weight: 3.9 Kgs

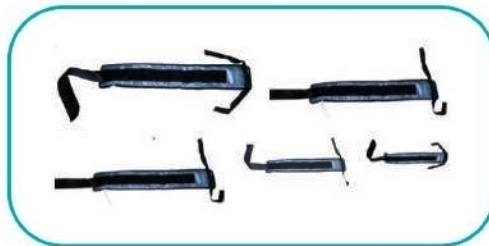
### Accessories:

- Fiber Optics Cable (International Quality Autoclavable)
- Power Cord

<b>Cuff pressure range:</b>	10 to 450mmHg
<b>Pressure regulation:</b>	Better then $\pm 5$ mmHg of set point (Maintains set pressure under leak conditions)
<b>Online setting:</b>	Increase and decrease in pressure settings
<b>Timer:</b>	Range from 9 hours to 59 minutes (0:05 hours to 9.59 hours)
<b>Alarm:</b>	Audible Buzzer on set time equaling elapsed value, in intervals of 1 min, after alarm time
<b>Switch Over:</b>	Automatic switch over from mains to battery of vice versa
<b>Power:</b>	230V (AC) /50Hz $\pm 10\%$
<b>Battery Charger:</b>	Constant Voltage, Current Limited & Auto Cutoff
<b>Digital display:</b>	Digital display of set pressure, actual pressure, elapsed time & set time
<b>Cuffs:</b>	Different sizes of five cuffs-washable & easy fitting (Large, Big, Medium, Small & Pediatric)
<b>Enclosure:</b>	ABS Plastic, with special Handle
<b>Dimensions:</b>	215mm (W) x 140mm (H) x 230mm (L)
<b>Weight:</b>	3.9 Kgs



### STANDARD ACCESSORIES



**Cuff Sets**



**Tubing**



## DUEL CUFF DIGITAL Tourniquet 9000DCT

### Specification:

- Enclosure: ABS Plastic, with special Handle
- Dimensions: 215mm (W) x 140mm (H) x 230mm (L)
- Weight: 9 Kgs

<b>Cuff pressure range:</b>	10 to 450mmHg
<b>Pressure regulation:</b>	Better than $\pm 5$ mmHg of set point (Maintains set pressure under leak conditions)
<b>Online setting:</b>	Increase and decrease in pressure settings
<b>Timer:</b>	Range from 9 hours to 59 minutes (0:05 hours to 9.59 hours)
<b>Alarm:</b>	Audible Buzzer on set time equaling elapsed value, in intervals of 1 min, after alarm time
<b>Switch Over:</b>	Automatic switch over from mains to battery of vice versa
<b>Power:</b>	230V (AC) /50Hz $\pm 10\%$
<b>Battery Charger:</b>	Constant Voltage, Current Limited & Auto Cutoff
<b>Digital display:</b>	Digital display of set pressure, actual pressure, elapsed time & set time
<b>Cuffs:</b>	Different sizes of five cuffs-washable & easy fitting (Large, Big, Medium, Small & Pediatric)
<b>Enclosure:</b>	ABS Plastic, with special Handle
<b>Dimensions:</b>	215mm (W) x 140mm (H) x 230mm (L)
<b>Weight:</b>	9 Kgs



## PULSE LAVAGE System 9000 PL

### Specification:

- Irrigation pressure can be electronically controlled.
- Easy loading of tubes in the machine
- Autoclavable and reusable tubes of medical grade silicon
- Complete sterility of system is maintained
- Foot control operated
- Fully Stainless steel unit for long life
- Efficient peristaltic pump
- Simple on/off switch
- Three types of irrigation possible
- Single stream tip For wider stream & general irrigation
- Side hole cannula for canal wash
- Multiple bottles with constant force
- In built voltage control rectifier
- Inbuilt safety fuse
- Power supply 230V (AC) / 50Mz +\_10%
- Dimensions: 190 (l) x 230 (w) x 190mm (h)
- Weight: 6.5 Kg. Approx



## SHAVER SYSTEM 9000SV

### Specification:

- Speed range 1200 to 5200 RPM
- Online setting allows online increase and decrease of set speed.
- Variable modes FORWARD, REVERSE & OSCILLATING modes.
- Attached blades easy blade fitting and removing in the hand piece.
- Easy foot control in variable blade modes (forward, reverse & oscillating).
- Shaver hand piece with cord fully autoclavable
- Suction control inbuilt in hand piece.
- Power supply 230V (AC) / 50Mz ± 10°A)
- In build voltage control rectifier
- Electric shock-proof handle
- Dimensions : 315mm (l) x 345 mm (w) x 90mm (h)
- Weight : 6.5 kgs.



### Reaming Hand Piece

Quick Couling for Flexible Remarks  
Light Wight (600grm. approx)  
Maximum Speed 400 RPM  
5.5mm cannulated  
Autoclavable, Hard Anodized for long life.



SI 498

### Cannulated Drill Hand Piece

Steel Drill Chuck (0-1/4")  
Light Wight (600grm. approx)  
Maximum Speed 1200 RPM  
5.5mm cannulated  
Autoclavable, Hard Anodized for long life.



SI 499

### Saggital Saw Hand Piece

Quick Couling for Flexible Remarks  
Five types of blades  
Light Wight (700grm. approx)  
Autoclavable, Hard Anodized for long life.



SI 500

## Bone Cutting Drilling & Reaming Systems

## ELECTRIC Drill

### Driving Unit

220 Volts/5 Amp. A.C. Supply  
Heavy Duty motor with completely enclosed  
Foot Control for On / Off and Speed

### Stand

Castors for Mobility  
Can be dismantled & packed into a Suitcase  
Auto cutoff switch a speial feature





Battery

Charger

MULTIFUNCTION  
**DRILL**  
SI 501

MULTIFUNCTION  
**POWER TOOLS**  
SI 502



Hand piece



cannulate drill attachment



Oscillating saw attachment



K-wire driver attachment



Cranial drill attachment



Cranial bur attachment



Sternum saw attachment



High speed drill attachment



Reciprocating saw attachment



Reaming drill attachment



Tplo saw attachment



Sternum saw

Oscillating saw

Multifunction

Reciprocating saw



Battery



Battery Case



Charger



Sterile ring



### K-WIRE Driver



0.8-1.8mm  
2.0-3.2mm

### High speed drill chuck



### Slow speed drill chuck



